

stern

STERN ENGINEERING LTD.



TUBULAR & EVER HAND DRYER

INSTALLATION AND MAINTENANCE GUIDE

INDEX

1	TECHNICAL DATA - ALL MODELS
2	TECHNICAL DATA - TUBULAR HD
3	PACK CONTENTS - TUBULAR HD
4	TECHNICAL DATA - TUBULAR DP HD
5	PACK CONTENTS - TUBULAR DP HD
6	TECHNICAL DATA - EVER HD
7	PACK CONTENTS - EVER HD
8	PRE-INSTALLATION INFORMATION
9-12	INSTALLATION
13-15	SETTINGS ADJUSTMENT
16	MAINTENANCE
17	WARRANTY

WARNING

WARNING! RISK OF FIRE OR ELECTRICAL SHOCK

- All electrical work is to be done in accordance with applicable codes and regulations.
- All electrical work must be done by qualified electricians
- Use this unit only in the manner intended by the manufacturer.
- Disconnect power before installing or servicing.

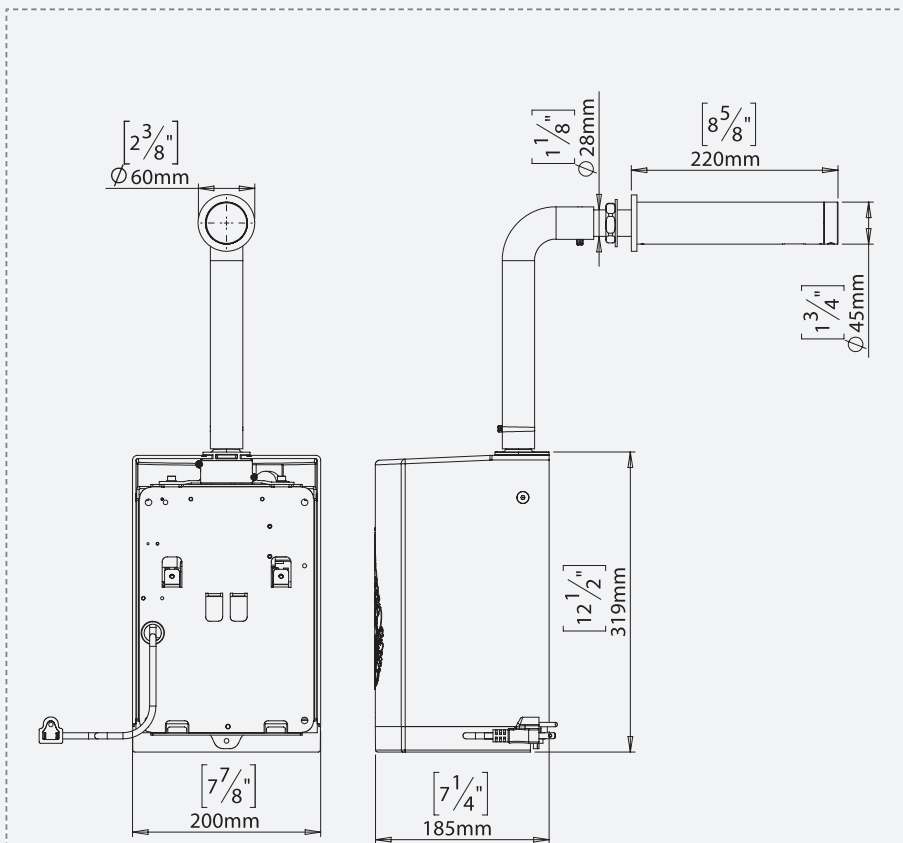
The information in this document reflects products at the date of printing. Stern Engineering Ltd reserves the right, subject to all applicable laws, at any time, at its sole discretion, and without notice, to discontinue or change the features, designs, materials and other specifications of its products, and to either permanently or temporarily withdraw any of the foregoing from the market. All information in this document is provided "as is" without warranty of any kind, either expressed or implied, including but not limited to any implied warranties of merchantability, fitness for a particular purpose, or non-infringement. Stern Engineering Ltd assumes no responsibility for errors or omissions in the information presented in this document. In no event shall Stern Engineering Ltd be liable for any special, incidental, indirect or consequential damages of any kind, or any damages whatsoever arising out of or in connection with the use or performance of this information. The tradenames, trademarks, logos and service marks presented in this document, including their design, are the property of Stern Engineering Ltd or other third parties and you are not permitted to use them without the prior written consent of Stern Engineering Ltd or such third party as may own them.

TECHNICAL DATA

Operating Voltage	110-120 Vac, 50/60 Hz, 12.2-13.4 A, 1.34-1.6 Kw 220-240 Vac, 50/60 Hz, 6.1-6.7 A, 1.34-1.6 Kw
Motor Thermal Protection	Auto Resetting Thermostat turns unit off, 120V at 135 °C (275 °F), 240V at 95 °C (203 °F)
Heater Element	450-900 W, adjustable
Heater Thermal Protection:	Auto Resetting Thermostat turns unit off at 85 °C [185 °F] Thermal fuse cuts unit off at 142 °C [288 °F]
Standy by Power	0.3-0.4 W
Circuit Operation	Infrared Automatic, self adjusting
Sensor Range	3" to 18" [80 mm to 450 mm], Adjustable; standart 8.66" [220 mm ± 20 mm]
Timing Protection	60 seconds auto shut off
Drip proof	IP 21

TECHNICAL DATA

TUBULAR HD



Tubular HD

350030

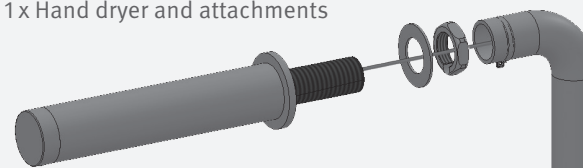
Tubular HD AISI316

350040

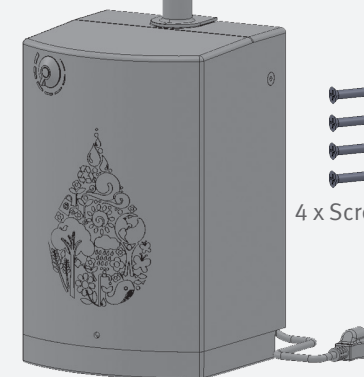
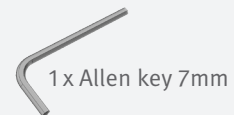
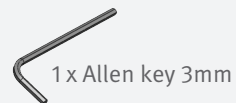
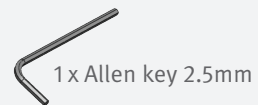
PACK CONTENTS

TUBULAR HD

1 x Hand dryer and attachments



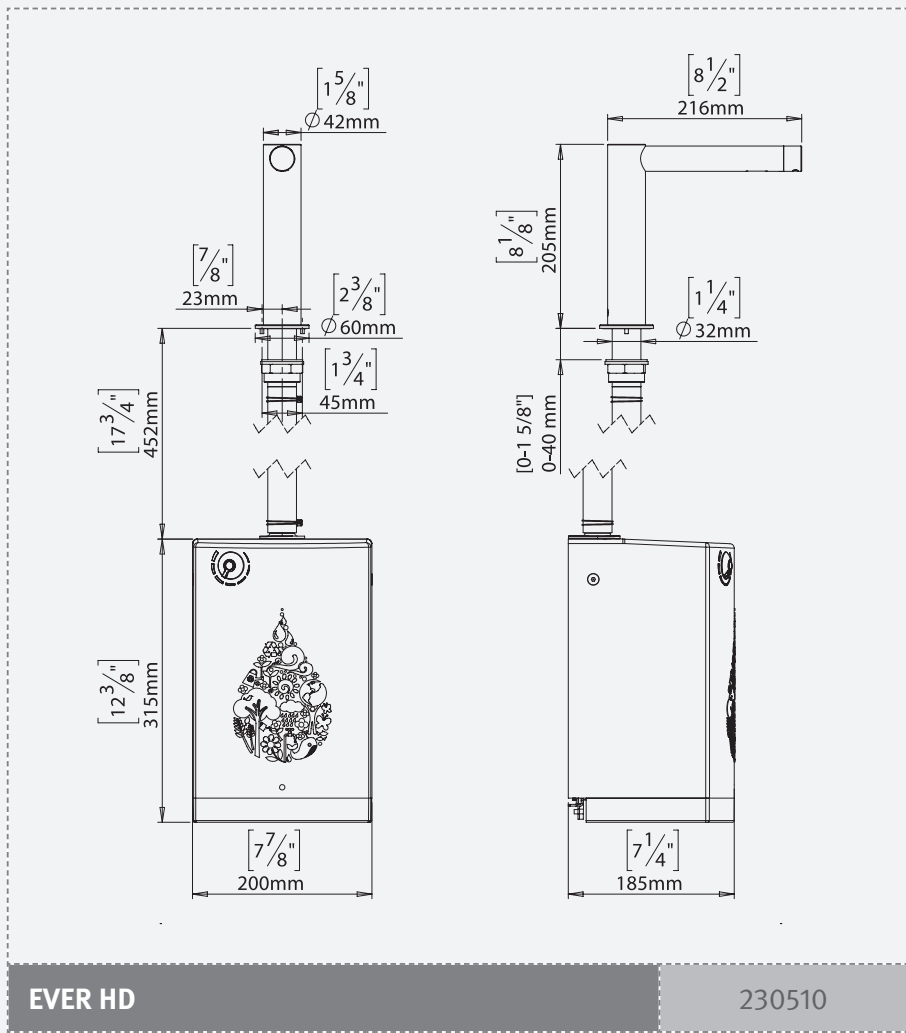
Hose + 2 clamps



1 x Hand dryer unit

TECHNICAL DATA

EVER HD



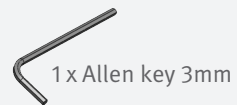
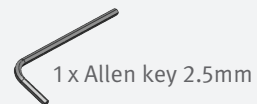
EVER HD

230510

PACK CONTENTS

EVER HD

1 x Hand dryer and attachments



Hose + 2 clamps



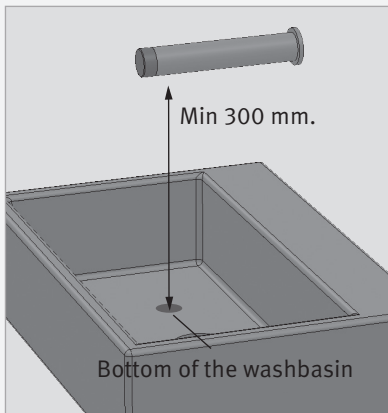
PRE-INSTALLATION INFO

CHECK CONTENTS

Separate all parts from the packaging and check each part with the pack contents section. Pay attention to the variations of the different models.

Make sure all parts are accounted for before discarding any packaging material.

If any parts are missing, do not attempt to install your electronic hand dryer until you obtain the missing parts.



WARNING

- 1) To avoid reflection problems keep a distance of more than 300 mm. between the sink and the spout.
- 2) Model that have an infrared sensor pointing down, are not intended to be used together with a sink of a reflective material such as stainless steel.

IMPORTANT

Installations in Australia and New Zealand must comply with the requirements of AS/NZS 3500.

WARNING

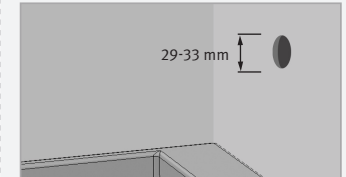
WARNING! RISK OF FIRE OR ELECTRICAL SHOCK

- All electrical work is to be done in accordance with applicable codes and regulations.
- All electrical work must be done by qualified electricians
- Use this unit only in the manner intended by the manufacturer.
- Disconnect power before installing or servicing.

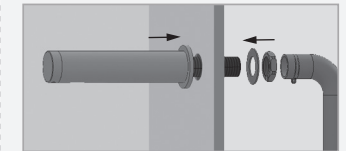
INSTALLATION

STEP 1 –INSTALL THE WALL UNIT - TUBULAR HD

- 1 Drill a 29-33 mm hole in the wall at the desired location.



- 2 Insert the base through the hole and fasten the nut and metal ring onto the base of the HD to hold it firmly in place.
Attach hose to base using the hose clamp (supplied).

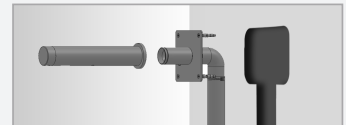


Continue with STEP 2: INSTALLING THE MOTOR (pages 10-11)

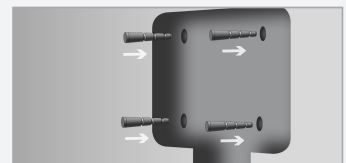
STEP 1 –INSTALL THE ROUGH IN PART - TUBULAR HD DP

In the brick or concrete wall, a hole must be carved into the wall to make space for the wall mount and air duct. The body must be removed from the base by opening the set screw at the base of the body.

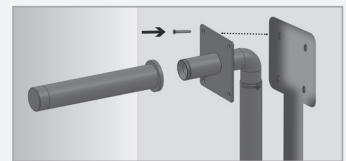
- 1 Cut an adequate opening in the wall according to the dimensions of the Tubular DP HD, the cables sleeve and the hose.



- 2 Drill 4 small holes for the tubular base support and drive the anchors in.



- 3 Secure the base support using the 4 screws. make sure that the base is leveled to the center.
After tiling mount the Tubular body onto the base and thread the cable through the base and air hose.

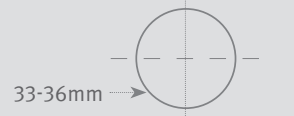


Continue with STEP 2: INSTALLING THE MOTOR (pages 10-11)

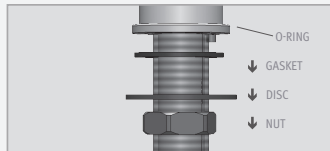
INSTALLATION

STEP 1 – INSTALL THE DECK UNIT - EVER HD

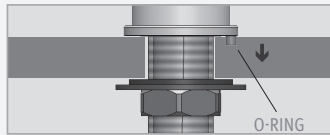
Recommended hole size



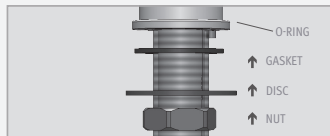
1 Remove the hexagonal nut, the disk and the gasket. Do not remove the O-ring from the base of the HD.



3 Place the HD with O-ring into the hole in deck or lavatory. Make sure the O-ring is located between the deck or lavatory and the bottom of the HD.

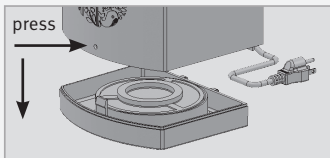


2 Slide the gasket, disk and hexagonal nut over the flexible hose and secure the HD into place.

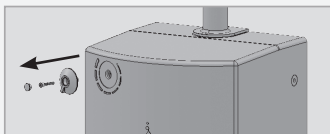


STEP 2 – INSTALL THE MOTOR UNIT - ALL MODELS

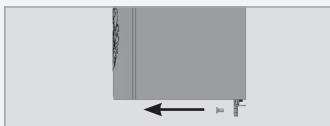
1 Remove the filter cover by releasing it by pressing the button



2 Remove knob cover using a flat screw driver. Remove screw using Allen key. Remove knob.

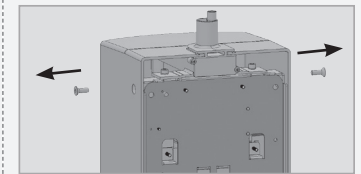


3 Loosen the lower locking bolt with a 3 mm Allen Key.

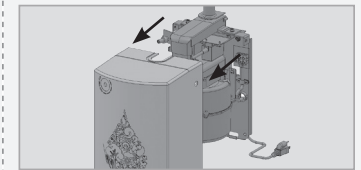


INSTALLATION

4 Remove the 2 locking screws located on either side of the motor unit using Allen key supplied.

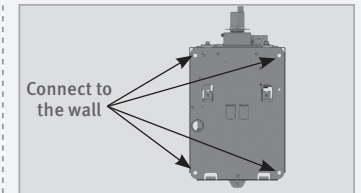


5 Remove the cover of the motor unit.

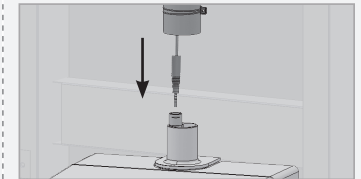


Note: To connect a hardwire cable or to change the existing power cable, See relevant section below.

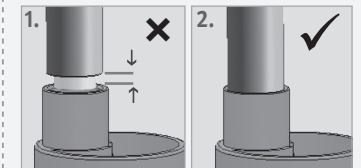
6 Position unit at the end of the air hose. Connect the unit firmly to the wall.
Note: Hose length can not be cut.
Note: make sure the bottom of the unit has a clearing of a minimum 10 cm (4") from any obstacle.



7 Attach the connector.



8 Please note that since the connector is water proof, some friction might apply.
 1. O-RING VISIBLE – NOT CONNECTED PROPERLY
 2. ONLY THE GROOVES ARE VISIBLE – CONNECTED PROPERLY



9 Reassemble cover, knob, filter housing. Connect the electricity.

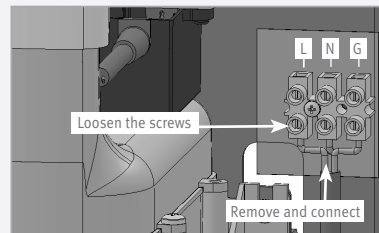


INSTALLATION

CONNECTING OPEN WIRE CABLES

- 1 Loosen the screws to remove the existing cable.

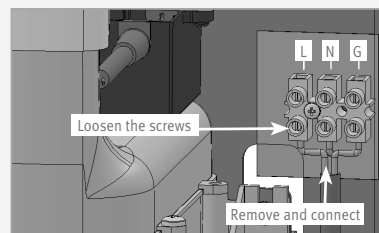
- 2 Connect the hardwire cable.



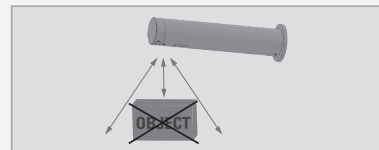
CHANGING THE CABLE

- 1 Loosen the screws to remove the existing cable.

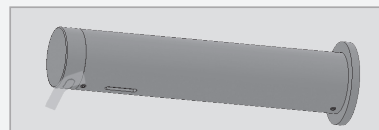
- 2 Connect the the preferred cable.



Before proceeding, check that no objects are in front of the sensor aside from the washbasin.



- 1 Remove the sticker covering the sensor eye wait 15 seconds for the sensor to set up.



- 2 Activate the hand dryer by placing hand below the sensor unit Remove hands when finished drying.

- 3 Air power can be increased or decreased by adjusting the power selector knob located on the motor unit.



SETTINGS ADJUSTMENT



Adjusting the settings with the remote control

If necessary, the sensor settings can be adjusted as following:

Shut off the water supply. In order to adjust the sensor with the remote control, hold the remote control straight in front of the sensor in a distance of about 6-8" (15-20cm). Choose the function you want to adjust by pressing once on one of the function buttons. After pressing once on a specific function button, a quick flashing of the LED at the front of the sensor will occur. At this stage, you can change the setting by pressing the (+) or the (-) buttons, every push will increase or decrease one level. After finishing the adjustment, turn the water supply back on.

SETTINGS ADJUSTMENT



DETECTION RANGE: This Hand Dryer was supplied with a self adjusting sensor. The ideal detection range for the specific location will be set automatically.

Only if necessary, use the remote control to adjust the sensor range as follows:

Press the RANGE button. Wait until a quick flashing of the LED in the sensor eye is perceived. Then, press + to increase the range and – to reduce it. Every push will increase or decrease one level.

Note: Once you have changed the detection range with the remote control, the distance will be remembered by the sensor, even if the power source is disconnected. To get back to the self adjustment mode, use the ADJ button only.



ENTRANCE TO THE SELF ADJUSTMENT MODE: Check that no objects are in front of the sensor. Press the ADJ button. Once a quick flashing of the LED of the sensor eye is perceived, remove your hand holding the remote control and move away from the sensor area. The ideal sensor range for the specific location will be set automatically. Once the self adjustment has taken place, the hand dryer will activate for 1 second as an indication that the ideal sensor range was set and the product is ready for use.



SECURITY TIME: The Security time, prevents continuous running due to reflections or vandalism. By default, if the sensor is covered for more than 90 seconds the unit will shut off automatically. To resume regular operation any obstruction must be removed.

Press the SEC button. Wait until a quick flashing of the LED in the sensor eye is perceived. Then, press + to increase the security time and – to reduce it.

SETTINGS ADJUSTMENT



DELAY IN TIME: If required, the delay in time can also be modified in faucets as follows:

Press the IN button. Wait until a quick flashing of the LED in the sensor eye is perceived. Then, press + to increase the delay in time and – to reduce it.



DELAY OUT TIME: The delay out time is the amount of time it takes for the unit to shut off after the user removes their hands.

If required, the delay out time can be modified as follows:

Press the OUT button. Wait until a quick flashing of the LED in the sensor eye is perceived. Then, press + to increase the delay out time and – to reduce it.



TEMPORARY OFF FUNCTION: This function is ideal to perform any kind of activity in front of the sensor without operating the system (for example, cleaning).

The Hand Dryer will remain shut for 1 minute when this button is pressed once. To cancel this function and to return to normal operation press the On/Off button again or wait 1 minute.



RESET BUTTON: This function restores all the factory settings except for the sensor range. If required, press the Reset button and without releasing it, press the + button once.

NOTE: To enter the self adjusting mode, use the ADJ button. To change the sensor range, use the RANGE button.

MAINTENANCE

- a. Regular cleaning of the hand dryer is recommended to ensure optimum functioning of the dryer.
- b. Any access to the dryer will be done only after it has been disconnected from the power supply.
- c. Clean the dryer with a damp cloth.
- d. Do not squeeze the cloth.
- e. Do not rinse the dryer with a water hose.
- f. Do not use any material that is worn or scratched (iron, scotch, etc.).
- g. Do not use any aggressive cleaning agent (acid or base).
- h. No cleaning is required for internal parts.
- i. Be sure to clean the motor unit filter every few months (depending on the nature of use) replace if necessary.

LIMITED WARRANTY

Y. Stern Engineering Ltd. warrants that its electronic products will be free of defects in material and workmanship during normal use for two years from the date the product is purchased.

If a defect is found in normal use, Y. Stern Engineering Ltd. will, at its discretion, repair, provide a replacement part or product, or make appropriate adjustments. Damage caused by accident, misuse, or abuse is not covered by this warranty. Improper care and cleaning will void the warranty. Proof of purchase (original sales receipt) must be provided to Stern Engineering Ltd. with all warranty claims.

Stern Engineering Ltd is not responsible for labor charges, installation, or other incidental or consequential costs other than those noted above. In no event shall the liability of Stern Engineering Ltd. exceed the purchase price of the product.

If you believe that you have a warranty claim, contact your Stern Distributor, Dealer or Plumbing Contractor. Please be sure to provide all pertinent information regarding your claim, including a complete description of the problem, the product, model number, the date the product was purchased, from whom the product was purchased and the installation date. Also include your original invoice.

Y. STERN ENGINEERING AND/OR SELLER DISCLAIM ANY LIABILITY FOR SPECIAL, INCIDENTAL OR CONSEQUENTIAL DAMAGES. This warranty excludes product damage due to installation error, incorrect maintenance, wear and tear, battery, product abuse, or product misuse, whether performed by a contractor, service company, or the consumer. This warranty does not cover product damage caused by the following:

- Incorrect installation.
- inversions of supply pipes.
- Pressures or temperatures exceeding recommended limits.
- Improper manipulation, tampering, bad or lapsed maintenance.
- Foreign bodies, dirt or scale introduced by the water supply or soap tank.
- Use of the soap outside of viscosity specifications.
- Alteration of the original soap/foam dispenser components (including pipes).

stern

STERN ENGINEERING LTD.

777 Passaic Avenue, Clifton NJ, 07012, USA

Tel: +1-973 773 8011 | Fax: +1-973-779-8768

Toll Free: 1-800-4364410

info@sternfaucets.com | tech@sternfaucets.com

